



ACS News

Scan & Sort Goods Quickly and Accurately at Your E-Commerce Operation

A close-up photograph of an ACS image-based scanner mounted on a conveyor belt. The scanner is processing cardboard boxes as they move along the belt. The background shows the industrial structure of the warehouse.

"With the image-based scanners, our current read rate is **OVER 99%**. We're able to process a lot more orders with the same amount of people."

—Jason Kim, Forever 21

15%
PRODUCTIVITY

COST SAVINGS OF APPROX.
\$1 MILLION
PER YEAR

Global ecommerce retail sales continue to rise exponentially, and fulfillment centers must work with more and more suppliers. Packages shipped in from suppliers may have poorly printed or plastic-wrapped labels, scratched barcodes, or overpacked boxes which can contribute to errors and costly inefficiencies. The operation needs the tools in place to get the right product to the right customer at the right location as quickly as possible to ensure customer satisfaction. Fortunately, Cognex barcode readers offer solutions:

- Prevent or correct label and shipping errors
- Drive up efficiency & throughput
- Lower maintenance costs
- Read smudged, damaged, or distorted codes
- Read codes at extreme angles, even past 85 degrees
- Read codes with variations in appearance
- Improve depth-of-field and field-of-view coverage for omnidirectional code reading
- Provide real-time performance feedback

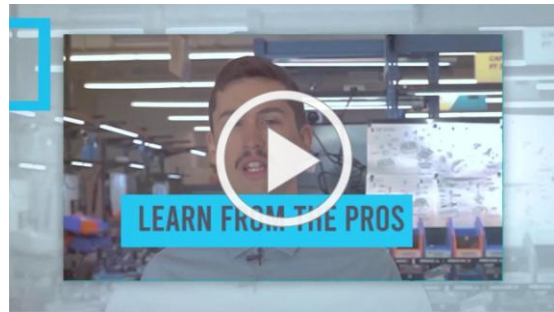
[Get an Onsite Demo](#)



Automate Your CNC Machine with Lean Robotics



[What is Robotiq eLearning?](#)



[Automate Your CNC Machine Using Lean Robotics](#)

Robotiq eLearning is the only online platform on collaborative robots that integrates Lean Robotics concepts and real application content. The program accelerates cell design with extensive courses, offers support in the integration phase and gives relevant information on Robotiq products to start production faster.

eLearning also explains how to use the Lean Robotics methodology to deploy a collaborative robot in front of a CNC machine. You'll learn how to install all the hardware you need, how to use components of a typical CNC machine tending cell, and learn about the programming aspects of the robot.

[Try E-Learning Here](#)



Introducing New Remote I/O for the Industrial Internet of Things



Just announced: a new family of intelligent, standalone, Ethernet-based, PoE-powered, remote I/O units for IIoT and automation applications. The first unit in the groov RIO family provides 8 multi-signal, multifunction, software-configurable channels and 2 Form C relays, supporting over 52,000 unique signal combinations: analog or discrete, input or output.

RIO lets you connect traditional wired switches and sensors directly to Ethernet networks, software applications, and cloud platforms without the need for intermediate hardware such as PLCs, PACs, PCs, or gateways to propagate I/O signals to other systems. A driving reason behind Opto 22's development of groov RIO was to help users be able to get data from the real world—such as a pump on/off status or thermocouple readings—into a database, application, or other system.

[Read More RIO Capabilities](#)



New Conveyors Can Be Configured to Meet the Needs of Almost Any Application

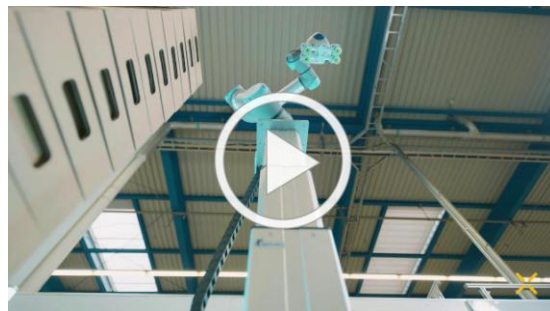


New QC Conveyors Flextrac series conveyors demonstrate flexibility with sturdy, modular conveyors capable of inclines, declines, straight sections and curves. They can be configured to meet the needs of almost any application, including gripper elevators and alpine conveyors. Thanks to their modular design, they can also be reconfigured as your plant changes and grows.

[Learn More About Flextrac](#)



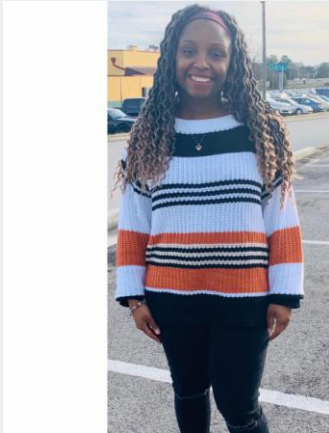
Expand the Capabilities of Your Cobot



Ewellix offers a range of linear motion axes - vertical and horizontal – to easily expand the capabilities of a cobot. Additional linear axes can significantly enhance the cobot's radius of action up to 5 times,

by re-positioning the base of the robot during its working cycle. They are perfect for palletizing and handling applications. Both the vertical and horizontal options are complete plug & play solutions, and are UR+ certified.

[Read More About Ewellix](#)



Employee Spotlight- Meet Courtney

What would you like to know about Courtney, one of our Inside Sales Specialists?

[Read More](#)

Upcoming Workshops & Classes

Machine Vision Intro & Enhancements Workshop:

March 10 in Knoxville, TN: [Register Here](#)

Cognex EasyBuilder & Spreadsheet Class:

March 17-20 in Marietta, GA: [Register Here](#)

Collaborative Robots Workshops:

March 24 in Marietta, GA: [Register Here](#)

April 16 in Birmingham, AL : [Register Here](#)

Cognex 3D-Designer Class:

March 31-April 3 in Marietta, GA: [Register Here](#)

Opto 22 EPIC Class:

April 8-10 in Marietta, GA: [Register Here](#)

[Visit our website](#)

